

XQS

Stainless Steel Submersible Pump



Application

- Small electrical irrigation and drainage equipments
- Particularly applied in urban well water pumping, field irrigation and drainage, garden irrigation and household water supply, as well as drainage of industrial accumulated water, water supply and drainage for construction, livestock breeding, etc.

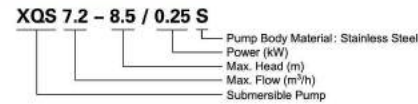
Pump

- Stainless steel pump body
- Max. immersion depth: 5 m
- Max. liquid temperature: +40°C
- Liquid pH value: 4 – 10
- Max. liquid density: 1.03x10³ kg/m³

Motor

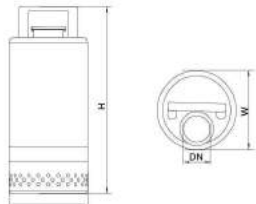
- Copper winding
- Built-in thermal protector
- Stainless steel welded shaft
- Insulation class: B
- Protection class: IP68

Identification Codes



Technical Data

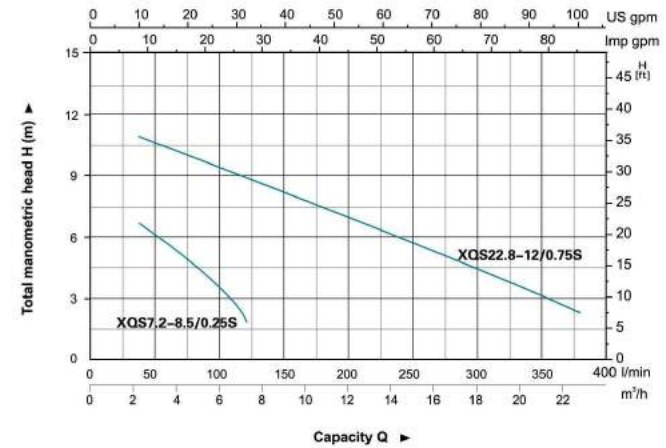
Model	Power		Outlet diameter (mm)	Voltage (V/Hz)	Max. flow (l/min)	Max. head (m)	GW (kgs)	Packing size (mm)	Quantity (PCS/28 TEU)
	(kW)	HP							
XQS7.2-8.5/0.25S	0.25	0.33	40,32,25	220/50	120	8.5	10.2	175x175x360	2131
XQS22.8-12/0.75S	0.75	1.0	50	220/50	380	12	19.2	220x220x440	1132



Dimension

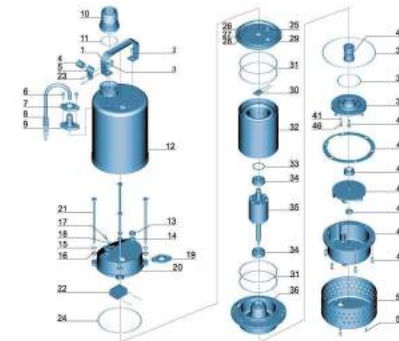
Model	DN	L (mm)	W (mm)	H (mm)
XQS7.2-8.5/0.25S	1 1/4"	142	142	300
XQS22.8-12/0.75S	2"	170	170	380

Hydraulic Performance Curves



Materials Table

No.	Part	Material	No.	Part	Material
1	Handle	Stainless steel	27	Switching washer	65Mn
2	Screw	Stainless steel	28	Washer	CuZn40
3	Nut	Stainless steel	29	Motor cover	Stainless steel
4	Protector	FKM	30	Thermal protector	
5	Cable presser	Stainless steel	31	O-ring	FKM
6	Screw	Stainless steel	32	Rotor	
7	Flange	Stainless steel	33	Wave washer	65Mn
8	Cable		34	Ball bearing	
9	Cable protector	CR	35	Rotor	
10	Connector	ABS	36	Connection part	Stainless steel
11	O-ring	FKM	37	O-ring	FKM
12	Motor shell	Stainless steel	38	O-ring	FKM
13	Rubber washer	FKM	39	Oil chamber cover	Stainless steel
14	Washer	Steel	40	Mechanical seal	SiC/SiC
15	Switching washer	Stainless steel	41	O-ring	FKM
16	Washer	Stainless steel	42	Pump body	Stainless steel
17	Screw	Stainless steel	43	Screw	Stainless steel
18	O-ring	FKM	44	Oil seal	
19	Rubber washer	FKM	45	Impeller	Stainless steel
20	Capacitor cover	Stainless steel	46	Screw	Stainless steel
21	Bolt	Stainless steel	47	Nut	Stainless steel
22	Capacitor	FKM	48	Rubber washer	FKM
23	Screw	Stainless steel	49	Screw	Stainless steel
24	O-ring	FKM	50	Screw	Stainless steel
25	Cable holder	NBR	51	Filter mesh	Stainless steel
26	Screw	CuZn40			



XQS

Stainless Steel Submersible Pump



Application

- Small electrical irrigation and drainage equipments
- Particularly applied in urban well water pumping, field irrigation and drainage, garden irrigation and household water supply, as well as drainage of industrial accumulated water, water supply and drainage for construction, livestock breeding, etc.

Pump

- Max. immersion depth: 5 m
- Max. liquid temperature: +40°C
- Liquid pH value: 6.5 – 8

Motor

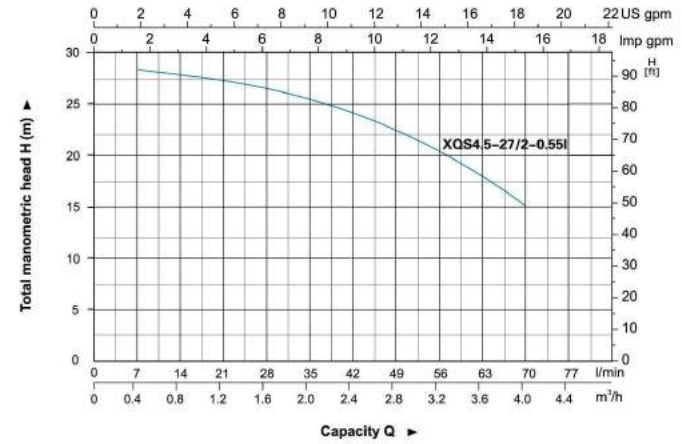
- Copper winding
- Built-in thermal protector
- Stainless steel welded shaft
- Insulation class: B
- Protection class: IP68

Identification Codes

XQS 4.5-27/2-0.55 I

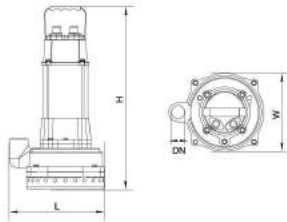
- Submersible Pump
- Max. Flow (m³/h)
- Max. Head (m)
- Impeller Stage
- Power (kW)
- Pump Body Material: Cast Iron

Hydraulic Performance Curves



Technical Data

Model	Power		Outlet diameter (mm)	Voltage (V/Hz)	Max. flow (l/min)	Max. head (m)	GW (kgs)	Packing size (mm)	Quantity (PCB/20TEU)
	(kW)	HP							
XQS4.5-27/2-0.55I	0.55	0.75	25	220/50	75	27	21.8	500x270x235	980

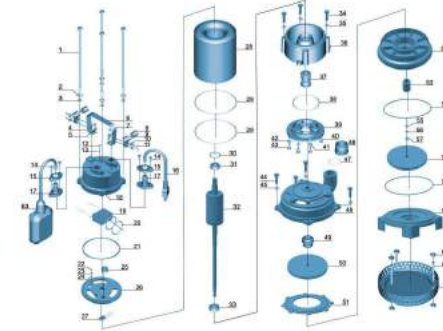


Dimension

Model	DN	L (mm)	W (mm)	H (mm)
XQS4.5-27/2-0.55I	1"	235	198	462

Materials Table

No.	Part	Material	No.	Part	Material
1	Bolt	Stainless steel	33	Ball bearing	Stainless steel
2	Stretching washer	Stainless steel	34	Bolt	Stainless steel
3	Washer	Stainless steel	35	Washer	Stainless steel
4	Bolt	Stainless steel	36	Connection part	HT200
5	Washer	Stainless steel	37	Mechanical seal	Carbon/Ceramic
6	Handle	Stainless steel	38	O-ring	NR
7	Kit	Stainless steel	39	Oil chamber cover	HT200
8	Protector	NR	40	Screw	Stainless steel
9	Cable protector	Stainless steel	41	Washer	Stainless steel
10	Washer	Stainless steel	42	O-ring	Stainless steel
11	Screw	Stainless steel	43	Screw	Stainless steel
12	Bolt	Stainless steel	44	Bolt	Stainless steel
13	O-ring	NR	45	Washer	Stainless steel
14	Bolt	Stainless steel	46	Connector	ABS
15	Flange	Stainless steel	47	O-ring	NR
16	Cable	48	Pump body	HT200	
17	Cable protector	CR	49	Mechanical seal	Carbon/Ceramic
18	Capacitor cover	HT200	50	Impeller	PPPO
19	Capacitor	51	Outlet cover	PPPO	
20	O-ring	NR	52	Guideleaf	PPPO
21	O-ring	NR	53	Sleeve	PPO
22	Screw	CuZn40	54	O-ring	NR
23	Stretching washer	604H	55	Washer	Stainless steel
24	Washer	CuZn40	56	Stretching washer	Stainless steel
25	Cable holder	NR	57	Nut	Stainless steel
26	Motor cover	HT200	58	O-ring	NR
27	Thermal protector	59	Pump cover	HT200	
28	Stator	60	Nut		
29	O-ring	NR	61	Ball nut	Stainless steel
30	Wave washer	62	Fiber mesh	Stainless steel	
31	Ball bearing	63	Float switch		
32	Rotor				



XQS

XQS

Stainless Steel Submersible Pump



Application

- Small electrical irrigation and drainage equipments
- Particularly applied in urban well water pumping, field irrigation and drainage, garden irrigation and household water supply, as well as drainage of industrial accumulated water, water supply and drainage for construction, livestock breeding, etc.

Pump

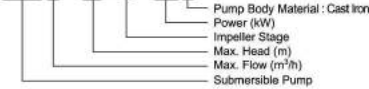
- Max. immersion depth: 5 m
- Max. liquid temperature: +40°C
- Liquid pH value: 6.5 – 8

Motor

- Copper winding
- Built-in thermal protector
- Stainless steel welded shaft
- Insulation class: B
- Protection class: IP68

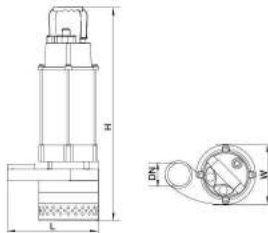
Identification Codes

XQS15-30/2-1.1 I



Technical Data

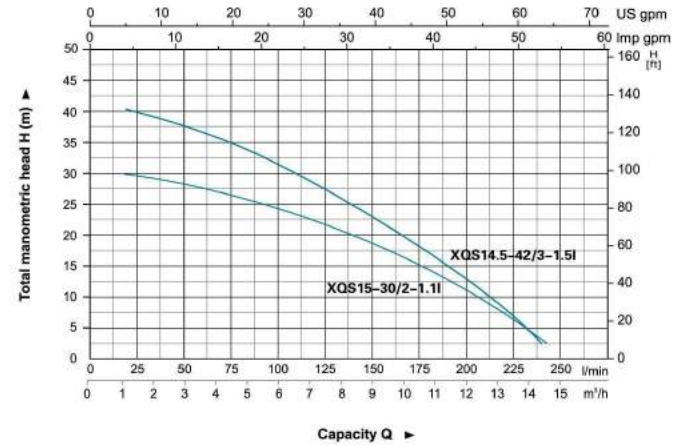
Model	Power		Outlet diameter (mm)	Voltage (V/Hz)	Max. flow (l/min)	Max. head (m)	GW (kgs)	Packing size (mm)	Quantity (PCS/20 TEU)
	(kW)	HP							
XQS15-30/2-1.1	1.1	1.5	50	220/50	250	30	23.3	555x290x220	840
XQS14.5-42/3-1.5	1.5	2.0	50	220/50	240	42	26.8	625x285x205	814



Dimension

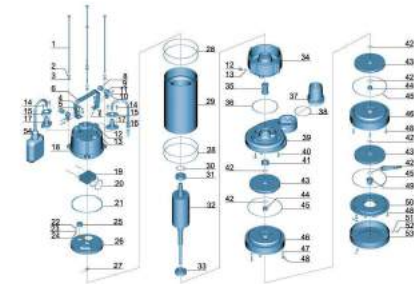
Model	DN	L (mm)	W (mm)	H (mm)
XQS15-30/2-1.1	2"	232	152	508
XQS14.5-42/3-1.5	2"	232	152	567

Hydraulic Performance Curves



Materials Table

No.	Part	Material	No.	Part	Material
1	Bolt	Stainless steel	29	Stator	
2	Stretching washer	Stainless steel	30	Wave washer	65Mn
3	Washer	Stainless steel	31	Ball bearing	
4	Disc	Stainless steel	32	Rose	
5	Washer	Stainless steel	33	Ball bearing	
6	Handle	Stainless steel	34	Correction part	HT200
7	Nut	Stainless steel	35	Mechanical seal	Ceramic/Carbon
8	Protector	NBR	36	O-ring	NBR
9	Cable presser	Stainless steel	37	Connector	ABS
10	Washer	Stainless steel	38	O-ring	NBR
11	Screw	Stainless steel	39	Pump body	HT200
12	Bolt	Stainless steel	40	Screw	Stainless steel
13	O-ring	NBR	41	Oil seal	
14	Screw	Stainless steel	42	Rubber washer	NBR
15	Flange	Stainless steel	43	Impeller	HT200
16	Cable		44	Ring	Steel
17	Cable protector	CR	45	O-ring	NBR
18	Capacitor cover	HT200	46	Discase	HT200
19	Capacitor		47	Stretching washer	Stainless steel
20	O-ring	NBR	48	Screw	Stainless steel
21	Rubber washer	NBR	49	Nut	Stainless steel
22	Screw	Cu2Ni40	50	Pump cover	HT200
23	Stretching washer	Stainless steel	51	Washer	Stainless steel
24	Screw	Cu2Ni40	52	Screw	Stainless steel
25	Cable holder	NBR	53	Filter mean	Steel
26	Motor cover	HT200	54	Float switch	
27	Thermal protector		55	Key	Steel
28	O-ring	NBR			



XQS

Stainless Steel Submersible Pump



Application

- Small electrical irrigation and drainage equipments
- Particularly applied in urban well water pumping, field irrigation and drainage, garden irrigation and household water supply, as well as drainage of industrial accumulated water, water supply and drainage for construction, livestock breeding, etc.

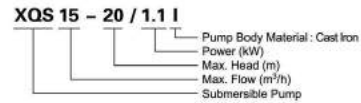
Pump

- Max. immersion depth: 5 m
- Max. liquid temperature: +40°C
- Liquid pH value: 6.5 – 8

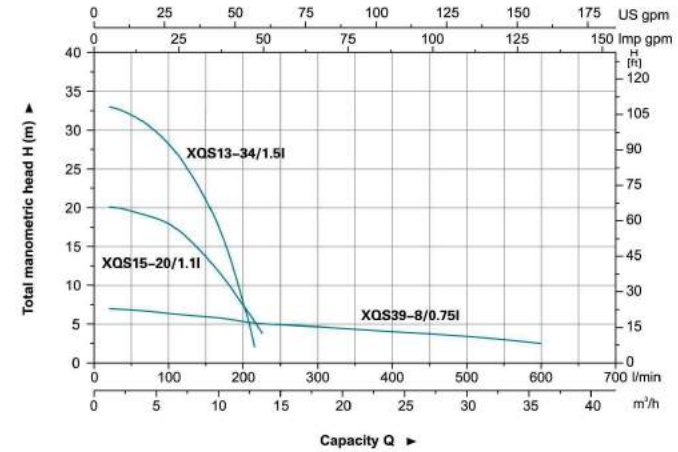
Motor

- Copper winding
- Built-in thermal protector
- Stainless steel welded shaft
- Insulation class: B
- Protection class: IP68

Identification Codes

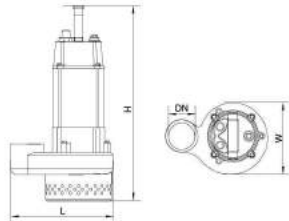


Hydraulic Performance Curves



Technical Data

Model	Power		Outlet diameter (mm)	Voltage (V/Hz)	Max. flow (l/min)	Max. head (m)	GW (kgs)	Packing size (mm)	Quantity (PCS/20' TEU)
	(kW)	HP							
XQS39-8/0.75I	0.75	1.0	75	220/50	660	8	21.6	580x320x250	684
XQS15-20/1.1I	1.1	1.5	40,32,25	220/50	250	20	21.5	510x290x220	880
XQS13-34/1.5I	1.5	2.0	40,32,25	220/50	216	34	25.3	580x320x250	648



Dimension

Model	DN	L (mm)	W (mm)	H (mm)
XQS39-8/0.75I	2 1/2"	207	109	500
XQS15-20/1.1I	1 1/2"	238	177	460
XQS13-34/1.5I	1 1/2"	250	205	512

Materials Table

No.	Part	Material	No.	Part	Material
1	Bolt	Stainless steel	26	Thermal protector	
2	Stretching washer	Stainless steel	27	O-ring	MBR
3	Washer	Stainless steel	28	Stator	
4	Bolt	Stainless steel	29	Wave washer	65Mn
5	Washer	Stainless steel	30	Bolt bearing	
6	Handle	Stainless steel	31	Rotor	
7	Nut	Stainless steel	32	Ball bearing	
8	Protector	ABS	33	Lower cover	HT200
9	Cable prosser	Stainless steel	34	Oil seal	
10	Washer	Stainless steel	35	Connector	ABS
11	Screw	Stainless steel	36	O-ring	MBR
12	Bolt	Stainless steel	37	Pump Body	HT200
13	O-ring	MBR	38	Mechanical seal	China/Carbon
14	Screw	Stainless steel	39	Impeller	HT200
15	Flange	Stainless steel	40	Nut	Stainless steel
16	Cable		41	O-ring	MBR
17	Cable protector	CR	42	Pump body	HT200
18	Capacitor cover	HT200	43	Washer	Stainless steel
19	Capacitor		44	Screw	Stainless steel
20	O-ring	MBR	45	Filter mesh	Steel
21	Cable holder	MBR	46	Washer	Stainless steel
22	Screw	CuZn40	47	Screw	Stainless steel
23	Stretching washer	65Mn	48	Stretching washer	Stainless steel
24	Washer	CuZn40	49	Float switch	
25	Upper cover	HT200			

